

Electoral Area "F"

Official Community Plan

September 2008

Issue No. 1

COMING EVENTS

- f **Public Information Meeting**
7:00 PM
September 18, 2008
McConnell Creek
Farmers Institute Hall
35483 Hartley Road
Mission, BC
- f **Community Planning Survey**
Please watch for it in the mail this fall. Your response is important to us!



McConnell Creek—Hatzic Prairie Plan Update

The McConnell Creek—Hatzic Prairie Official Community Plan is up for review.

The existing Plan was adopted in 1988. It has served the community well for twenty years. Yet, it is time to update it to reflect current community values, recent provincial legislation, and new trends in development.

What is an Official Community Plan?

An Official Community Plan (OCP) is the foundation for land use planning in McConnell Creek and Hatzic Prairie. It sets out a vision for the overall development of the area and policies for achieving that vision. The Plan will provide guidance to the Regional Board, property owners and developers on a broad range of matters.



What will the Plan Cover?

Provincial legislation requires OCPs to address:

- f areas specified for residential development;
- f commercial, agricultural, recreational, public utility and other land uses;
- f environmentally sensitive and hazard lands;
- f sand and gravel deposits suitable for extraction; and,
- f public services.

How will it be Developed?

The new OCP will be developed through consultation with residents, stakeholders, government agencies, and other groups. An advisory Planning Commission (see Page 2) made up of local residents will play a key role in formulating the Plan.

Public Information Meeting

Fraser Valley Regional District will hold a public information meeting to:

- f start the planning process to update the McConnell Cr.-Hatzic Prairie OCP;
- f present the preliminary findings of an overview geotechnical study; and,
- f identify volunteers to serve on an Advisory Planning Commission to assist with community plan development.

The public information meeting will be held:

7:00 PM

Thursday September 18, 2008
McConnell Creek Farmers Institute
35483 Hartley Rd, Mission, B.C.

For further information, please call 1-800-528-0061 or email planning@fvr.bc.ca.

Volunteer for the Advisory Group!

FVRD is seeking volunteers to serve on the Electoral Area "F" Advisory Planning Commission (APC). The APC is a committee of local residents that will be formed to guide development of the new Plan.

The Advisory Planning Commission will meet regularly while the planning process is underway. It requires a significant commitment to attend 6–10 meetings, prepare for informed discussions, and collaborate respectfully and openly with others.

Being a part of an APC is a challenging and rewarding. It can be hard work, but most people find it to be empowering and informative.

If you are interested in volunteering for the EA "F" Advisory Planning Commission, please submit a brief letter stating your interest as well as your relevant background and experience to:

FVRD Planning Department
45950 Cheam Avenue
Chilliwack, BC V2P 1N6
Fax: 604.792.9684
Email: planning@fvrд.bc.ca

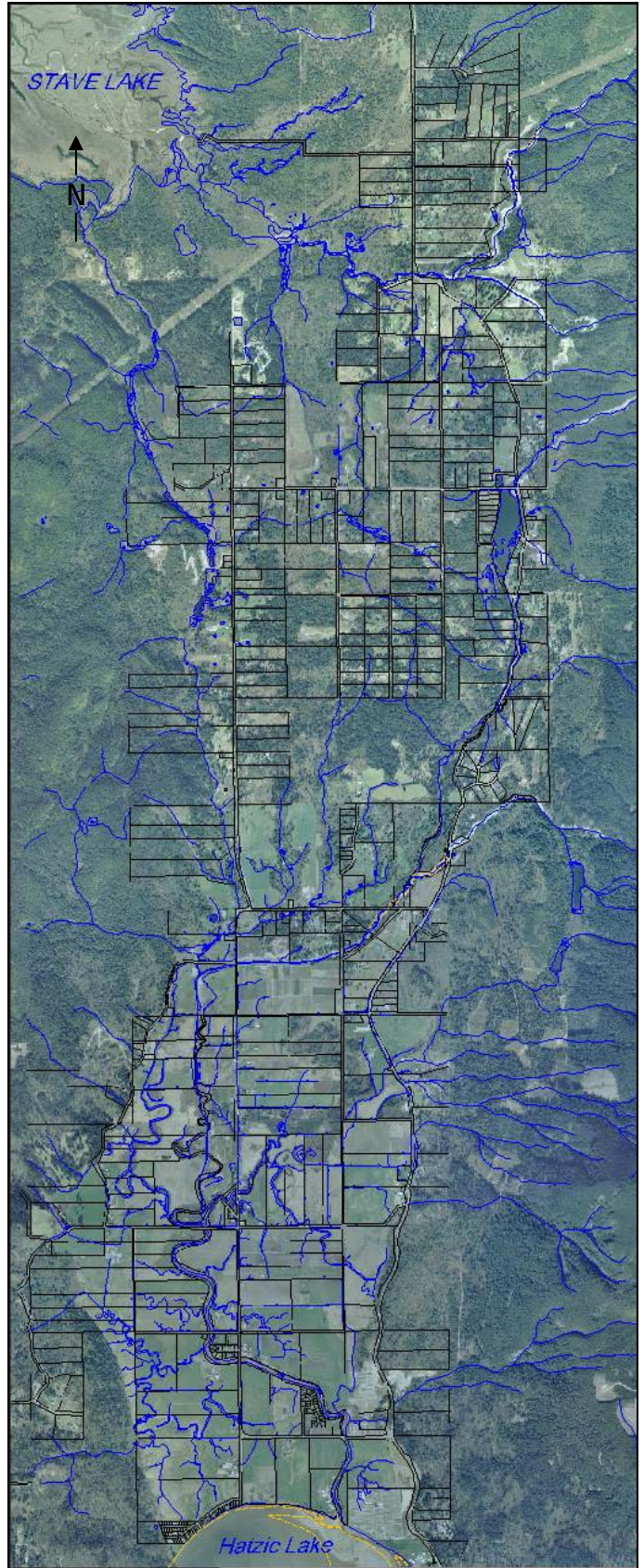
McConnell Creek–Hatzic Prairie

The new community plan for Electoral Area "F" will cover the area roughly shown in the map at right.

McConnell Creek–Hatzic Prairie is a north-south oriented valley with agricultural lowlands bounded to the east and west by often steep slopes and alluvial fan complexes. It has many streams and wet-

lands.

The Plan area borders the District of Mission to the west. It includes lands north of Hatzic Lake to the top of Sylvester Road, including Hatzic Prairie, Durieu, McConnell Creek, Allan Lake, Cascade-Carratt, and Davis Creek areas.



Contact Us

Please contact us with your questions and comments:

Fraser Valley Regional District
45950 Cheam Avenue
Chilliwack, BC V2P 1N6
Tel: 1.800.528.0061 or
604.702.5000
Fax: 604.792.9684
Email: planning@fvrд.bc.ca

We are also on the web at:



A web page for the new McConnell Creek–Hatzic Prairie OCP will be posted soon.